

In order to use your sign on a Wi-Fi network, you will need to perform a first-time setup. This setup can be completed using a Windows-based computer and our included USB cable. You will need administrative access to your PC.

PRELIMINARY STEPS

- Download and Install the Impact PC Pro Software.
- The installation will ask you if you would like to make changes to your computer. Select "Yes"
- Install with all default options by selecting "Next" through each menu until the install completes.
- Unbox your sign and locate it near your PC. You must be close enough for your USB cable to reach from the sign to your PC. The sign should be at the same location as the Wi-Fi network.

PLUG IN THE SIGN AND POWER IT UP

- It will take approximately 60 seconds to boot up.

CONNECT YOUR SIGN TO YOUR PC VIA THE PROVIDED USB CABLE

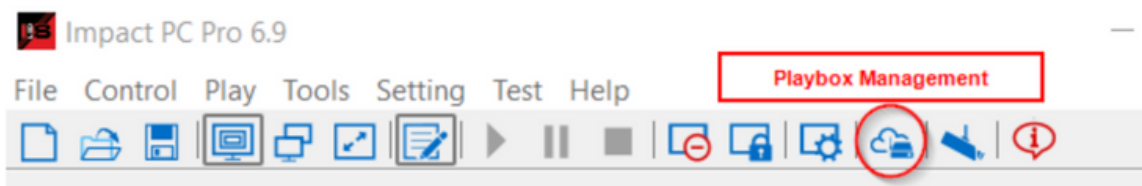
- Connect your sign to your personal computer with the provided USB cable.
- The cable is a printer-style cable.



OPEN THE IMPACT PC PRO SOFTWARE

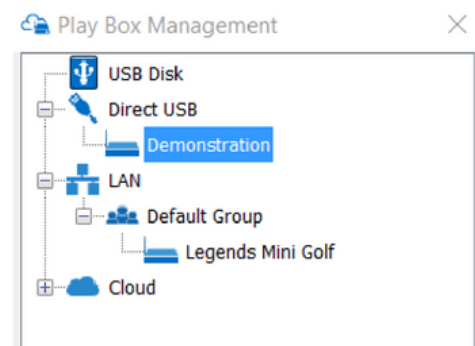
- The software may ask if you wish to allow it to make changes to your personal computer. If this is your first time opening it, the software will prompt you to check your computer - select "No."

SELECT THE PLAYBOX MANAGEMENT BUTTON



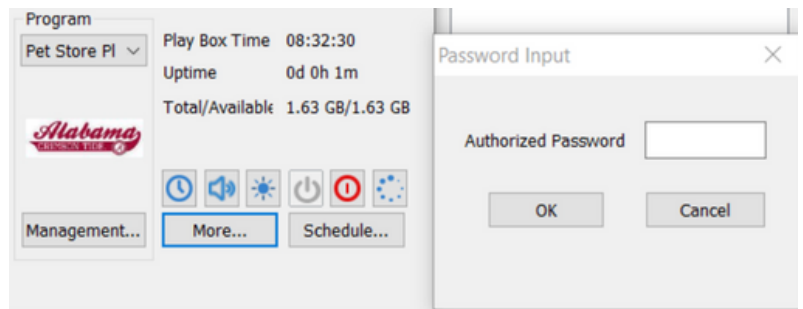
SELECT YOUR SIGN UNDER "DIRECT USB"

- It will be named after your business, or the site where it is being displayed.



SELECT THE "MORE" BUTTON

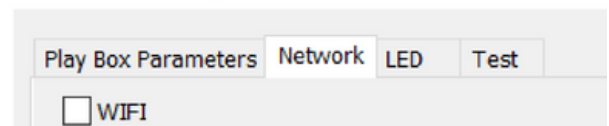
- A password prompt will display.
The password is 168



SELECT THE NETWORK TAB WHEN THE ADVANCED SETTINGS MENU OPENS

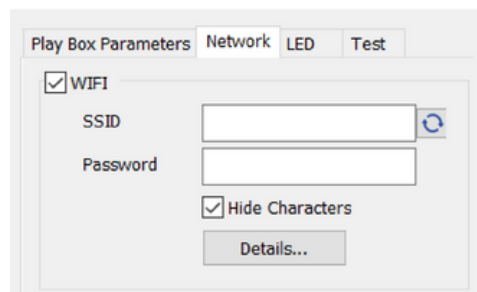
- It will take approximately 60 seconds to boot up.

Advanced Settings



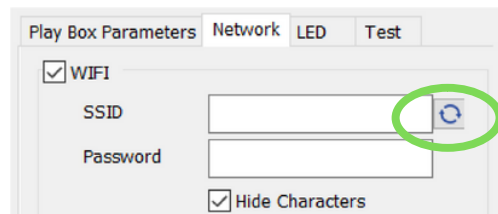
CHECK THE WI-FI CHECKBOX

- The display will change to an SSID and Password field. SSID and Password will be blank.



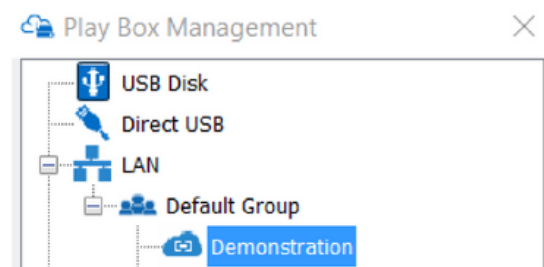
CLICK THE REFRESH BUTTON NEXT TO THE SSID FIELD

- the sign's wireless receiver will scan for all Wi-Fi signals in range and return a list. Find yours and double-click it



ENTER YOUR WIFI PASSWORD IN THE PASSWORD FIELD AND APPLY

- An alert box will appear and display "Apply Succeed" click OK.
- Close the advanced settings window your sign will go offline as it reboots. You may disconnect the USB cable from your sign.
- Your sign will now display in the LAN category instead of direct USB. if it does not, right-click on LAN and select Refresh.



YOU MAY NOW LOG INTO THE CLOUD SYSTEM WITH YOUR PROVIDED CREDENTIALS TO ACCESS YOUR SIGN AND BEGIN CREATING PLAYLISTS.

Should you require the assistance of our technical support team, please call 1-800-398-0576 and select extension 3 OR submit a ticket at <https://impactledsigns.com/support/>

Thank you for choosing Impact LED!